





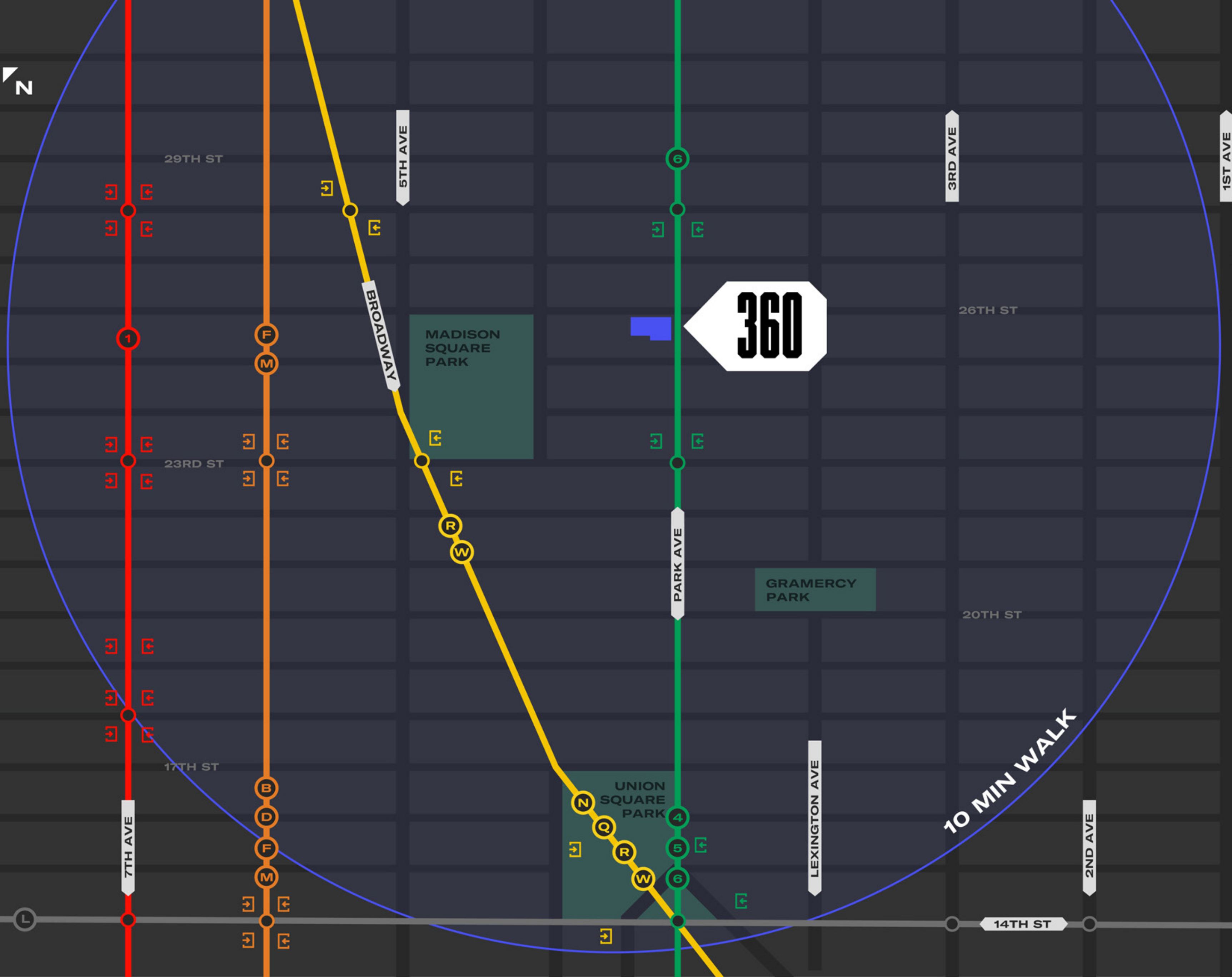


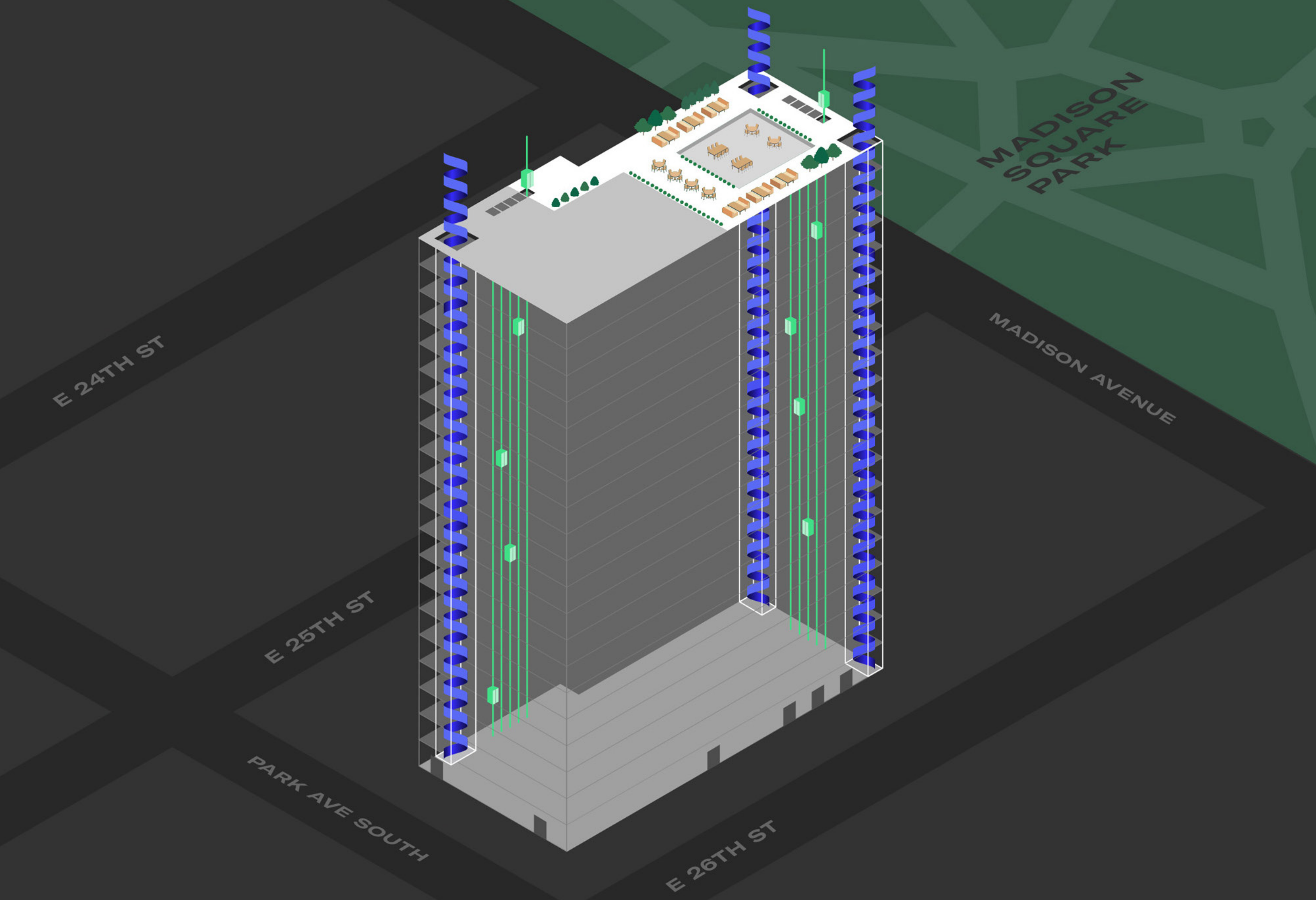




THREE SIXTY
PARK AVE SOUTH





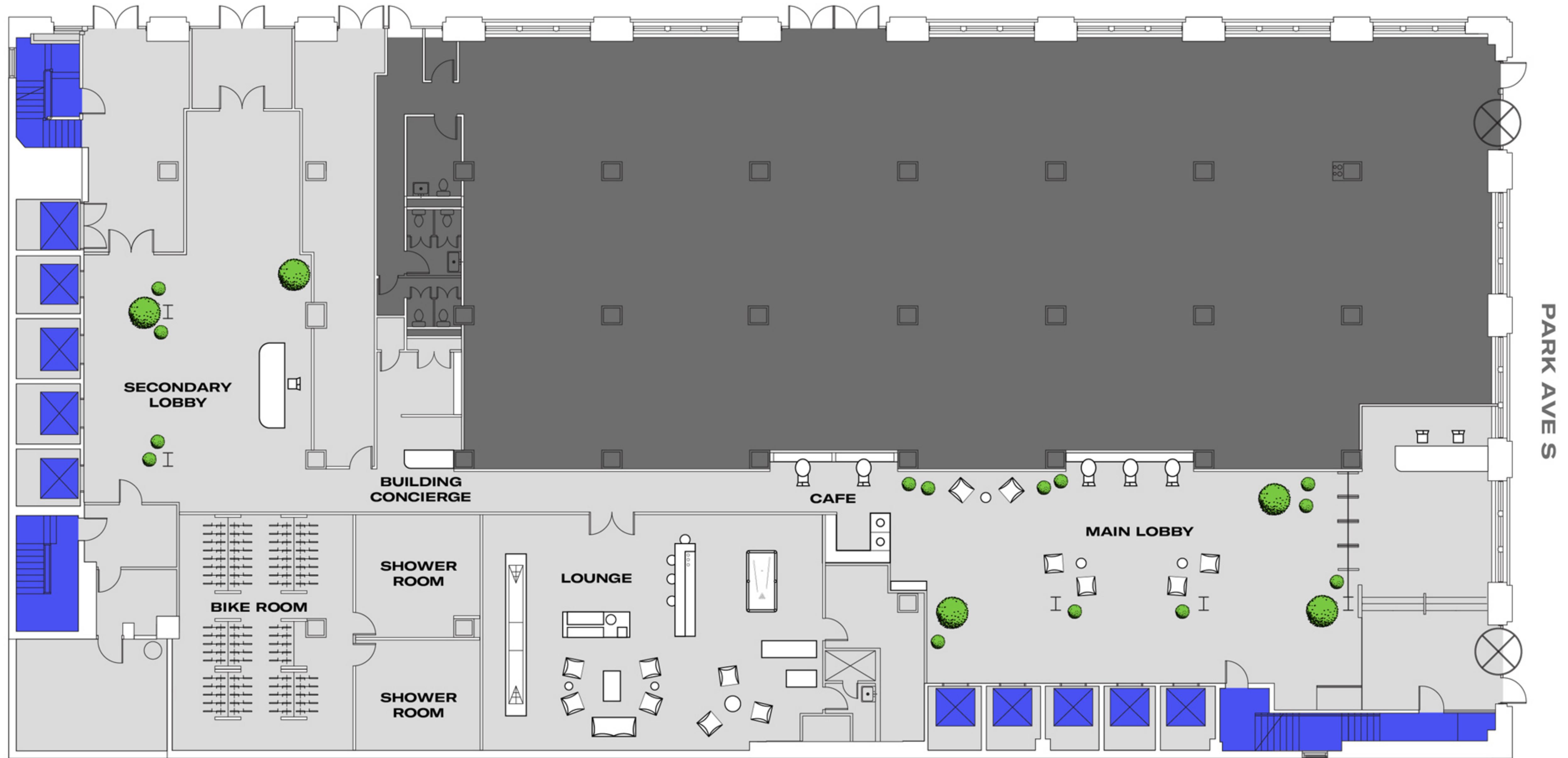


LOBBY

FLOOR 1

23,792 RSF

E 26TH ST



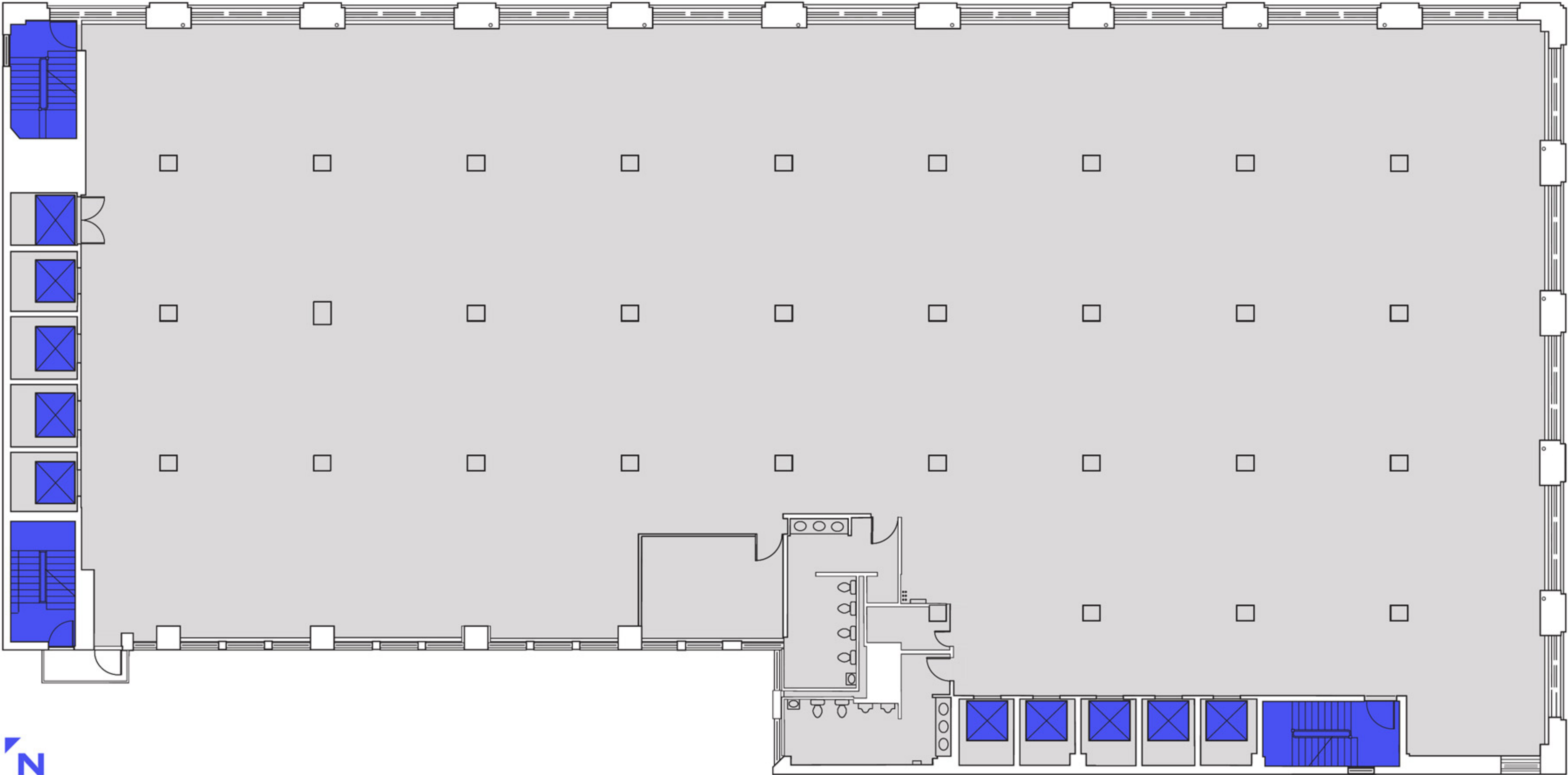
OFFICE

FLOORS 2-20

23,038 RSF

E 26TH ST

PARK AVE S



OFFICE

FLOORS 2-20

23,038 RSF

E 26TH ST



TOTAL POPULATION:
211 PEOPLE

RSF/PER PERSON:
109

- | | | |
|---|---------------------|-------------------------------|
| 1. 8-10 Person Meeting – QTY: 2 | 6. Coffee Bar | 11. Men's Restroom |
| 2. 3-4 Person Meeting – QTY: 2 | 7. Mother's Room | 12. Women's Restroom |
| 3. 1-2 Per. Phone Rooms – QTY: 5 | 8. Copy/Print | 13. Single Occupancy Restroom |
| 4. Break-Out / Hot-Desking Areas – QTY: 6 | 9. MDF Closet | 14. Freight Lobby |
| 5. Workstations (60"X32") – QTY: 211 | 10. Electric Closet | 15. HVAC |

THREE SIXTY
PARK AVE SOUTH

ROOFTOP

5,015 SF

E 26TH ST

PARK AVE S

